

BRINGING
Youth Services
KIDS HOPE™



forward
M O M E N T U M

2018-19 Annual Report

The mission of Youth Services is to promote the social and emotional well-being of children and youth.

We believe every child should grow up happy, healthy, and with

hope



Dear friends,

Thank you for your commitment to Youth Services. At the end of every fiscal year, we have the opportunity to reflect. Most of this is done through numbers as we consider the growth in clients served, dollars raised, and lives touched. It is also done in words. I asked our team to share words that mark what the last year has meant to them. There are so many words we hear when trying to describe the work in the last year—Hope. Promise. Inspiration. Stress. Demand. Joy.— but the word that has struck a chord is *MOMENTUM*.

Momentum is the strength or force that allows something to continue or to grow stronger or faster—and that momentum is *YOU*. It is every dollar you donate and every hour you share. Momentum comes to us through every community member who refers a friend or school that calls about a student in crisis. It comes to us every time someone says “Youth Services was our first call.”

And that is why we are here—to be the first call. Momentum has driven us further into our quest to be the center of collaborative social-emotional support for children and youth. It has also embedded us deeper into the community and more accessible to those families who need our services most.

We see that increase in our numbers month after month. Across all clinical services we continue to grow. For example, referrals made for individual and group counseling services grew over 20% in the last year.

Our goal is to harness this momentum in order to continue delivering what the community needs. And you are a vital part of making that possible.

Thank you for your commitment to making a difference and for giving Youth Services the momentum to continue this critical work.

With appreciation,



Amy O'Leary, LCSW
Executive Director



MOMENTUM



contents

Mission & Vision Statement	2
Executive Director Letter	4
Staff, Board & FoYS Members	8
Financials	10
Programs	13
Therapeutic Process	24
Demographics	26
Program Spotlight	28
New Program Highlights	31
YS Impact	32
Volunteers Who Shine	34
Corporate Spotlight	36
Donors	40
Corporate Partners	51
In Kind Donors	52

Executive Director

Amy O'Leary, LCSW

Clinical Staff

Jeni Brickman, LCSW
Clinical Director

Alison Frye, LCPC
Director of Programming

Lizzy Appleby, LCSW
LuJuana Allen-Lightfoot, LPC
Kait Berger, LCPC
Jess Levine, LSW
Carolina Cormack-Orellana*
August Hupp
Julie Leonard, LPC*

Alexandra Mamalakis, BA*
Sarah Moskowitz-Gordon, LCSW
Stefany Nilsen, LPC*
Daniel Pak, LPC*
Becky Pollock, LCPC
Megan Shipp, LAT, ATC*
Bridgette Taylor, LCSW*
Cori Viola, LPC*
Brenna Weidman, LCPC
Jessica Wenk, LCSW

Volunteer Psychiatrist

Dr. Mojgan Makki, MD

Development Staff

Lisa Hanneman
Director of Development

Gina Fanady
Development Manager

Erin Miller
Development Manager,
Special Events

Jennifer Fitch
Volunteer Coordinator*

Michelle Brody
Marketing & Outreach Coordinator*

Administrative Staff

Bonnie Katz
Bookkeeper and HR Administrator*

Mary Povitsky
Receptionist

Sam Petromaneantu
Maintenance

*denotes part-time

FoYS — Friends of Youth Services

Sandy Brennan

Kelly Brown

Julie Bruch

Gretchen Flowers

Cathy Irwin

Missy Jerfita

Maritoni Kane

Beth Kirk Malecki

Soraia Mathein

Barb Nesbitt

Anne Neuhaus

Alison Schulte

Keri Williams

Board Of Directors Officers

President

Glenn Schneider
Executive Vice President and Chief
Information Officer, Discover

Vice President

Jeff Thoelecke
President, Northview Bank and Trust

Immediate Past President

Tom Klise
Chief Financial Officer,
OPTO International Inc.

Treasurer

Steve Koltun
Partner, RSM US LLP

Secretary

Donna Lee Gulley
Retired School Counselor

Members

Lisa Anastasia
Executive Producer, Media Direct Productions

Robert Anthony
Life Member

Pam Buchholz
Attorney

Mike Cabay
Retired Managing Partner, Accenture

Elizabeth Coulson
Education and Health Care Consultant

Howard Eirinberg
Chief Executive Officer, Kronos Food Corp.

Dan Fraser
Partner, Collective Impact Consulting

John Howard
Retired Senior Vice President, Fidelity Investments

Tracy Lande
Social Worker

Kathleen Lloyd-Jones
Staff Physician, Northwestern University Student
Health Services

Robb Leone
Principal and Co-Founder, Bian

Becky McLennan
Retired Teacher

Karen Paige
Attorney, Beerman Law

Bill Sullivan
Retired, Illinois Tool Works

Doug Welch
Director, Deloitte Consulting LLP

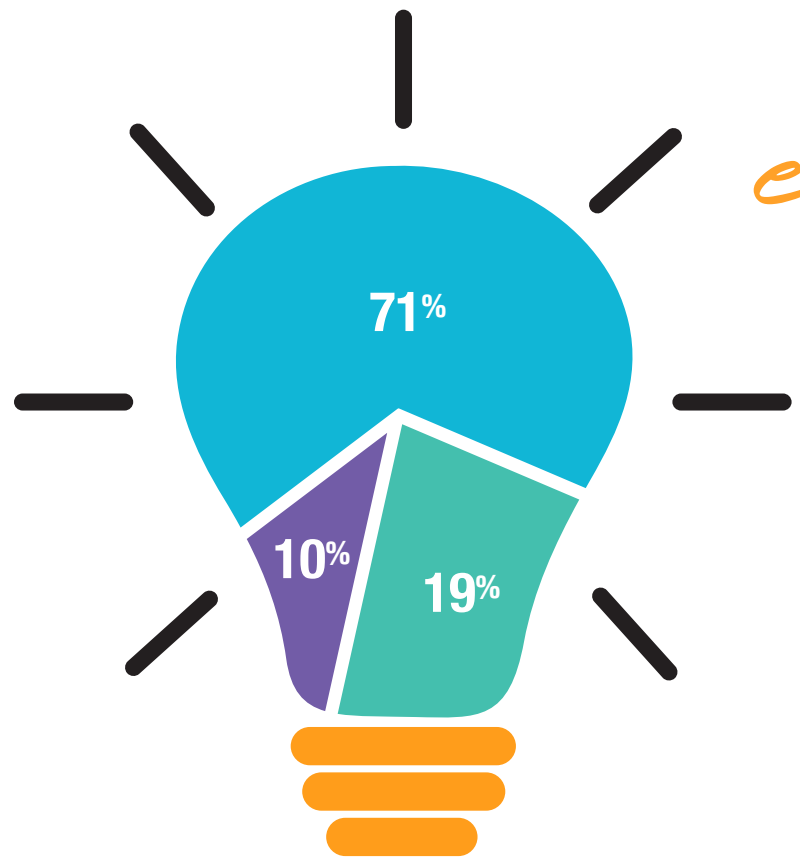
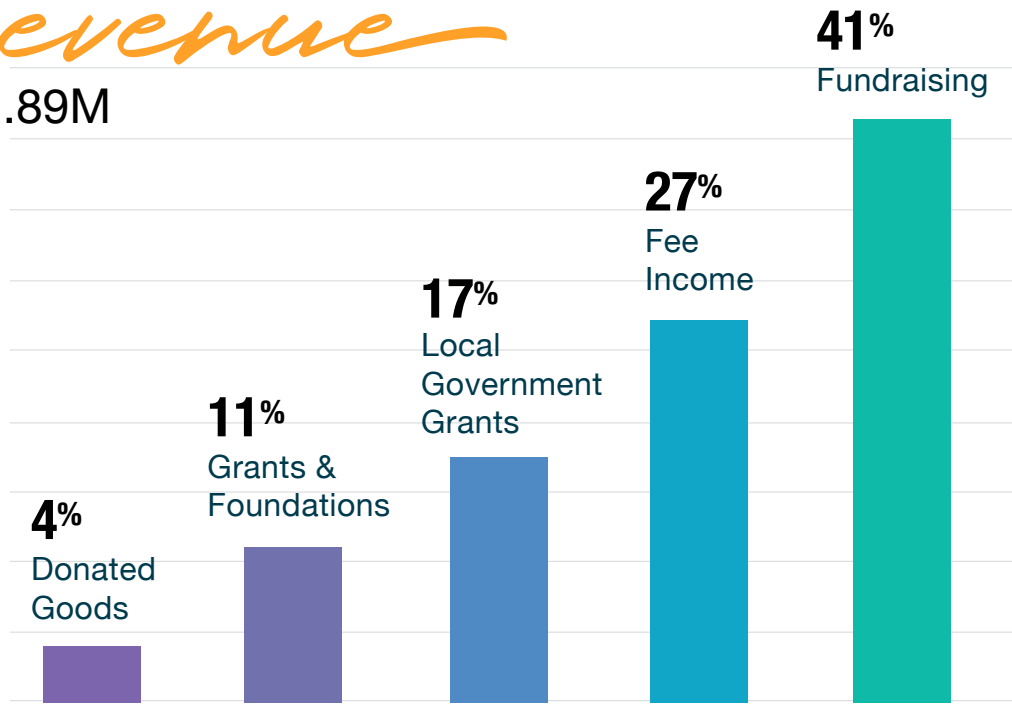
our team





revenue

\$1.89M



expense

\$1.88M

- Program Services
- Fundraising
- Management & General

These are preliminary financials for the year of July 1, 2018 - June 30, 2019

“you walk in
and it’s a
happy place.”



our programs

Every child is unique, and so is the approach we take in treating our clients. Our services fall on a spectrum ranging from early intervention to crisis response and are provided in a safe and therapeutic environment. By working with insurance companies and offering a sliding fee scale, care is provided to families of all means.





MENTAL HEALTH

counseling

Licensed clinicians provide individual and group therapy to children, teens, parents, and families struggling with a variety of issues including depression, anxiety, bullying, familial stressors, issues related to one's sexual or gender identity, trauma, grief and loss, and suicidal ideation.



50% of all lifetime cases of mental illness begin by age 14

— nami.org

314
youth
SERVED



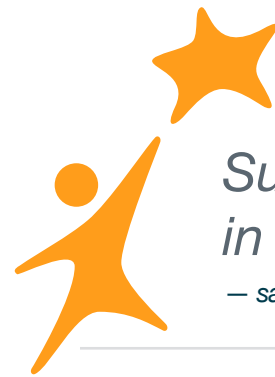
I've known you for a while now; you are kind, supportive, and very good at listening to me and everyone in group. Thank you so much for all you have done for me. I feel like I can be myself around you. You have helped me feel more confident with myself, and I really appreciate all the fun activities you plan for us. Thank you for listening to all of our problems, we can always count on you to say the right thing at the right time. I really love that you don't ever get mad at us or think our problems are dumb. I love group with you and with all of the girls."

— Member of Junior High Process Group



CRISIS *intervention*

Every week, agency therapists are called upon by a variety of schools to provide risk assessments for youth who are experiencing suicidal ideation or other at-risk behaviors. Additionally, Youth Services provides emergency financial assistance to local families experiencing unforeseen hardships.



Suicide is the 2nd leading cause of death in the world for youth 15-24 years old

— *save.org*

89
crisis
SITUATIONS



I am grateful for the high level of services that YS has provided to our school environment. Their programs are cutting edge and have not been seen in other high school districts. We continue to strive to evolve in our partnership and are looking forward to the work that we will engage in over the years to come.”

— *Eric Etherton, Assistant Principal, Student Services,
Glenbrook North High School*



AFTER SCHOOL

programming

Our after school programs include neighborhood-specific groups, Study Buddies, and the Youth Make a Difference Mentoring program. These groups offer structured and therapeutic activities that promote social and emotional learning in a safe environment. Our Juvenile Diversion program is also offered to youth who have broken the law and are in need of completing community service hours.



Studies reveal that effective after school programs can improve students' academic performance and classroom behavior, reduce drug use, encourage physical activity, and improve social skills.

— youth.gov/youth-topics/afterschool-programs/

512
youth
SERVED



For me I think it's a wonderful program that every child should be a part of. I think it's really good for my kids because I've watched them develop homework skills and also become more social through going to Study Buddies. Life is busy, and we have to work all the time – not only at work but also at home. I take the time to sit down with my kids and help with homework but it's so helpful to my family to have this program.

— *Parent of Study Buddies participant (2 years)*



PRIDE

youth

The Pride Youth Program serves LGBTQ+ children and youth ages 4-24 and their families through peer-to-peer support groups, opportunities for youth leadership development, and strong connections to supportive adults and outside referrals.



Over 80% of LGBTQ+ students have experienced verbal harassment at school within the last year because of their sexual or gender identity.

— 2017 nationwide GLSEN School Climate Survey



258
youth
SERVED

This being my second year with Youth Services' prideLEAD programming, I think what's really been the most impactful is being inspired by other young, LGBT-identifying leaders; people my age taking initiative in their schools and municipalities. It's a powerful thing to be a part of. In this community of young activists, people really seeking to make a difference, I feel Youth Services, in particular, has given me and my peers the space to do something that matters.

— prideLEAD member



SCHOOL & COMMUNITY

outreach

Through classroom workshops for students, continuing education and curriculum for teachers and professionals, and parent education, the SHARE program reaches thousands of children, teens, parents, and teachers at local schools and organizations with critical information on healthy relationships and sexual health and wellbeing. Youth Services also provides individual and support group services on-site at several schools when requested.



Nearly 1.5 million high school students nationwide experience physical abuse from a dating partner in a single year.

— loveisrespect.org/resources/dating-violence-statistics/

7,988
youth
& ADULTS
SERVED



The SHARE program has had a profound impact on my students. Their student-centered and engaging presentations have provided students with the information and skills necessary to foster healthy bodies and relationships. Evidence of Youth Services' dedication to the quality of the SHARE program is apparent with each presentation. They provide my students an experience they will remember throughout their lifetime.

— *Teacher, Antioch High School*

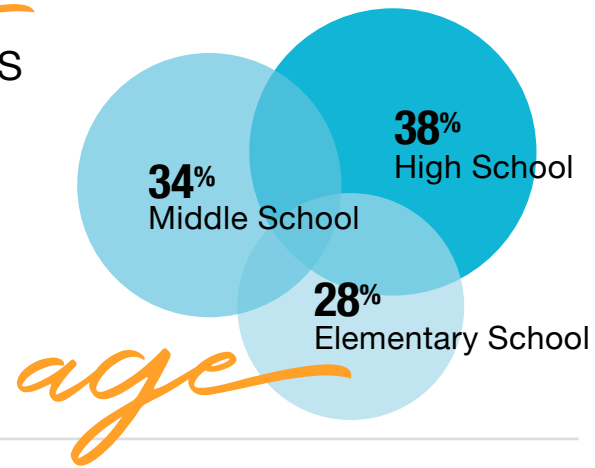


OUR THERAPEUTIC *process*





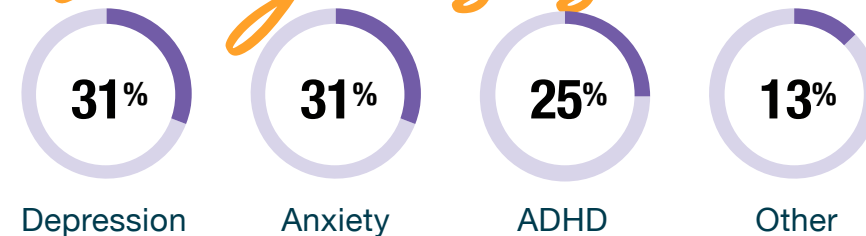
program
DEMOGRAPHICS



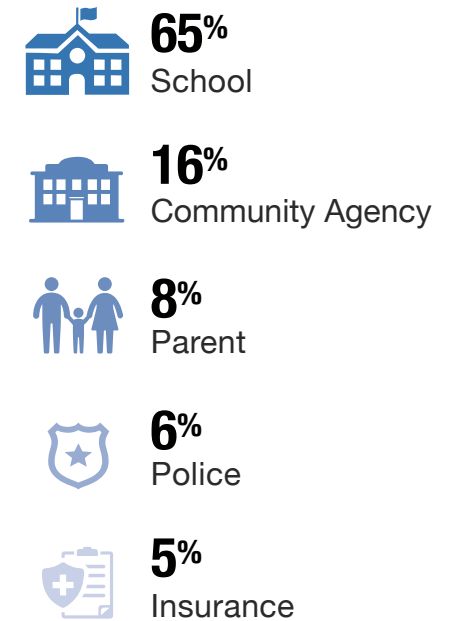
race

47% Hispanic
34% Caucasian
11% Asian
6% African American
2% Other

diagnosis



source





PROGRAM *spotlight*

For the second year in a row, Youth Services partnered with the Illinois Safe Schools Alliance to provide **Action Camp**, a 5 day sleepaway camp for LGBTQ+ rising 8th through 12th graders from across Illinois. Over 30 volunteer counselors, staff, and Youth Leaders led 60 campers in participating in peer-led workshops, camp activities like swimming and arts and crafts, and evening programs such as the camp-wide talent show to help develop confidence. For five magical days, all young people were affirmed and celebrated for who they were, and campers left with the necessary skills to start creating these spaces in their home communities.



Action Camp is like a bubble away from the outside world. Everyone is so accepting and kind and valid and snappy, and here at Action Camp, no one ever acts like you don't matter or aren't valid. It's perfect.

— Camper testimonial



This group is important because some students who just came to America get to know other people and understand them. This group helped me to communicate more with other people.

– ELL student, Glenbrook North High School

Junior year is hitting me so hard but Friday with this group gives me a time to be relaxed and actually enjoy things.

– ELL student, Glenbrook North High School

Often, the GBN counselors are overloaded and cannot connect with students regularly. Your presence in the building allows this to happen weekly, which is critical for many of our students. It also gives our students a place to “air their grievances.” Often, they won’t talk to teachers about certain issues they are having in school, so your group gives them the space to do this without “penalty.”

– Teacher, Glenbrook North High School

NEW PROGRAM *highlight*

Glenbrook North High School Support Group for English Language Learners

Youth Services partnered with Glenbrook North High School to offer a bi-weekly support group for English Language Learners. Designed to foster confidence in students’ own cultural identities while navigating a new school environment, the group enhanced peer connections and provided a sense of comfort and community. Clinical staff from Youth Services also offered regular individual check-ins for additional support.





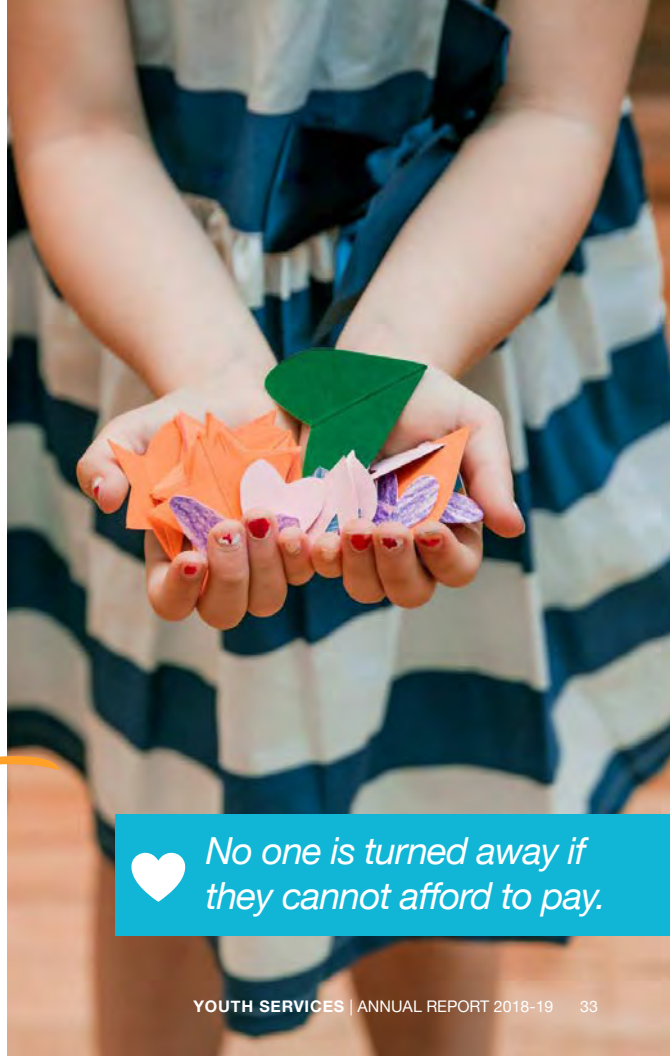
These are just a few examples of the many positive outcomes we have had in the past year.



1,600+
youth
& FAMILIES
SERVED



\$240,000
scholarships
PROVIDED TO
AGENCY CLIENTS



♥ No one is turned away if they cannot afford to pay.



I have been so lucky to have built incredible relationships with YS staff, volunteers, and students. I truly anticipate that some of these kids will be taking over when some of us retire.”

- Peggy

VOLUNTEERS WHO *shine*

Volunteers are key to Youth Services. A life-long volunteer, **Peggy Reynolds** is the embodiment of commitment to the families we serve. Having dedicated the last eight years as a Study Buddies tutor, Peggy spends her Monday and Wednesday evenings sharing her passion and excitement for promoting learning to her students. She always comes energized and with extra resources and activities for in hand. Our clients are so fortunate to have Peggy’s care and attention.



THANK YOU, Youth Services for giving us such a wonderful volunteer experience. What a phenomenal establishment it is! Very impressed by the facility, and even more so by the amazing employees and volunteers that enrich the lives of so many children and young adults.
- Corporate Employee Volunteer





CORPORATE

spotlight

Northview Bank & Trust has been a vital partner to Youth Services. By making annual, generous partnerships that support our programs throughout the year, running an important gift drive for our Holiday Gift program, and encouraging employee volunteerism, they truly have touched the agency in so many impactful ways. This year they shared financial literacy education with our Spanish-Speaking Moms Group, and employees gave many hours as tutors in our Study Buddies program, as well as attending our events and providing pro-bono expertise and support when needed. Youth Services is stronger to have such an important partner looking to make a lasting commitment in their own community.

WINTRUST
COMMUNITY BANKS

GLENVIEW BANK & TRUST | NORTHVIEW BANK & TRUST
NORTHBROOK BANK & TRUST



Northview Bank & Trust is so proud to support the critically important work that Youth Services provides for the young people in this community. As part of Wintrust Community Banks, it is our mission to provide support **LOCALLY**, because the benefit to those served can be more impactful and lasting. Children who are troubled or in crisis cannot afford to wait for when funding or clinical support is available. They need help **NOW**. Our support is not put forth for the purpose of recognition. We do it because it is the right thing to do, and these kids need all of us.

- Jeff Thoelecke, President, Northview Community Bank

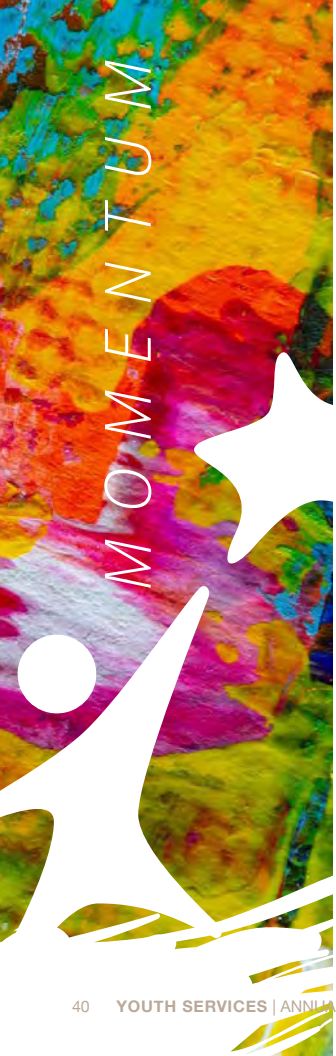




WE HAVE JUST ONE
goal

To foster the social and emotional
well-being of children and youth.





THANK YOU TO OUR *donors*

We greatly appreciate each gift given in support of Youth Services, and we have made every effort to ensure the accuracy of this listing.

\$100,000+

Village of Glenview
Village of Northbrook
Robert G. and Rebecca A. McLennan Foundation

\$25,000 to \$99,999

Anonymous
Cisco
Jeff and April Diehl
Jean Paul Ohadi Memorial Foundation
New Trier Township
Jeffrey and Katy Podjasek
Stephen and Jami Podjasek
Wintrust Financial Corporation

\$15,000 to \$24,999

Glenview School District 34
MLB (Making Life Better)
NetScout
Northfield Township
NorthShore University Health System

VMWare, Inc.

\$10,000 to \$14,999

Scott and Beth Brady
Michael and Sandy Brennan
Keith and Julie Bruch
Michael and Barbara Cabay
Charles & M. R. Shapiro Foundation
Discover Financial Services
Healthcare Foundation of Highland Park
Jackson National Life Insurance Company
Northbrook Civic Foundation
Pivotal
Tall Trees Association - Turkey Trot
Doug and Laura Welch

\$5,000 to \$9,999

Anthony Balestrieri and Ana Cassorla
Tom and Irene Benedict
Tom and Lisa Boylen
Jim and Pam Buchholz
Jim and Pat Dietz
Howard and Debbie Eirinberg
Rick Goldman
Glenn and Christine Kelly
Kiwanis Club of Glenview-Northbrook

Niles Township
Northview Bank & Trust
Margaret D. Reynolds
Robert and Ann Rowlands
Saints Peter & Paul Greek Orthodox Church
Glenn and Janet Schneider
Phil and Amy Schneider
Slalom, LLC
Stephen T. Sexton Memorial Foundation
The Davis Benedict Group at Morgan Stanley
Village Treasure House

\$2,500 to \$4,999

Peter and Anastasia Beniaris
Lloyd and Kathryn Bettis
Christ Church Winnetka
Tomas and Barbara Cintado
B.J. and Stacy Dolan
Eye Level
Bill Grady and Marita Janzen
Arlington and Karen Guenther
Donna Lee Gulley
Jerry Kurz and Kathryn Hall
John and Barb Howard
Jerry Kane and Julie Marshall
Thomas and Barbara Klise

Kronos Foods Corp
and Michael Loeber
Mercury Plastics
Jim and Margaret Middleton
Todd and Andrea Miller
Morgan Stanley Wealth Management
Tim Nealt
Scott and Jennifer Nelson
Tom and Virginia Neuckranz
Northbrook Clergy Association
Northwestern Medicine
Robinson Financial Group
Rotary Club Charitable Projects Foundation
of Northbrook
Solstice Consulting LLC
Jeffrey and Tiffany Thoeleck
Dan and Karen Walsh
David and Lisa Zimbler

\$1000 to \$2499

Andrew and Mona Albert
Joe and Lorain Anderson
Andreas Hogue Salon
Bob and Mary Bak
Dean and Mary Bekas
Joe Bonefas

Jack and Deedee Brannigan
Larry Butler
Christopher Carney
City of Highland Park
Don Civgin
Frank and Kara Clark
Jon Cohn and Ann Watson Cohn
Marguerite Cole
Bill Coulson and The Honorable
Elizabeth Coulson
Louise Curry
Rick and Kathy Davids
John and Jane Demler
Tom and Kelly Eavenson
Rob and Jen Farr
Harry and Irene Georgopoulos
Glenview Community Church Women's
Association - Chapter 1
Glenview Sunrise Rotary
Guarantee Trust Life Insurance
Steve Gustafson
Edward and Mary Kay Haben
Tom and Marcia Hall
John and Julie Hansen
Harbor Capital Advisors, Inc.
Graham and Susan Jackson
Karen May

Allan and Loretta Kaplan
Tom Kavenaugh
Matt and Maureen Keeshin
Steve Koltun
Tom and Marcia Korman
Robb and Christa Leone
Jeff and Tammy Lundal
Marvin and Jacqueline Lutz
Ralph Lynch and Tonya Wheeler
Jeff Gonyo and Peg Macaluso
John Marten
Steve and Nancy Milota
Linda Monico
North Northfield United Methodist Church
Bill and Jody O'Leary
Hilary Pontarelli
Thomas and Mary Prchal
Rotary Club of Glenview Noon
John and Beth Schmidt
Schuler Family Foundation
Linda Schwartz
Frank Sclavenitis
John Shane and Maureen Meersman
Marc and Jodi Sherman
Michael Solesky
Tavern at the Park
Brian Terwilliger

Fleur and Ronald Testa
Rich and Patty Tilghman
Brian Wendt
Darren and Rani Wesley
Ed and Deede Wittenstein

\$500 to \$999

@properties
Sam and Cathy Ach
William and Mary Lee Attea
Edward and Elinor Bass
Bill and Michelle Brody
Phil Callahan
Beth Congbalay
Congregation Beth Shalom
Connect Search, LLC
Country Classics
Jeffrey and Jane Crouth
Paul DeWoskin
Edward and Alice DiPiero
Divine Word Seminary
Stephen and Nancy Dowdle
Thomas Downing
Danielle Dunn
Jerry and Lucy Farr
Jill Flanders

Naomi S. Frankel
Carlos and Sandra Frum
Ann and Paul Gass
Glenbrook School District 225
Glenview Lions Club
Glenview United Methodist Church
Rich and Jill Gray
Grill House
John and Jennifer Grosshandler
Hallisy Gustavson
Hackney's on Lake
Jennifer Hafemann
Jonathan and Denise Handler
Donald and Linda Hanneman
Matt and Lisa Hanneman
Anita Hartshorne
Heartland Real Estate Management., Ltd.
Richard and Joyce Hirsch
Holly Jehle
Missy Jerfita
Rick and Lisa Klare
Tom and Lisa Klonecki
Knights of Columbus - Council 3731
Mike and Kellie Kopach
Greg Kunkel
Tracy Lande and Franklin Wolf
Richard and Joann Larson

Garret and Jill Leach
Todd LeBlanc
Lew and Laurel Leibowitz
Susan Livingston
Michael and Ann Mazzei
Judy McCarthy
Brad and Brittney McDermott
William McKinley
Mercer
Barbara Nesbitt
Northbrook Evangelical Covenant Church
Optimist Club of Glenview
Scott Overby
Paasche Airbrush Company
Karen Paige
Patricia Patterson and Scott Willis
Matthew Pauley
Brian and Jennifer Pettersen
Pythia LLC Marketing Strategy Consulting
Jeffrey and Jennifer Reis
Patricia Reynolds
Timothy and Alison Schulte
Anne and Jack Shea
Steven Slaber
George Sladoje
Rob Spiro
Mark and Nancy Stacy

Allan and Marilyn Te Ronde
The Baxter International Foundation Matching
Gift Program
The Chicago Community Trust
Triplex Screening Corp
Warady & Davis LLP
Arthur and Jennifer Wirtz
Janet and Jerrold Wolf
Timothy and Patricia Wolf

\$250 to \$499

9Round
Dino and Marigo Afendras
Salvador & Alvarez
Lisa Anastasia and Robert Bauer
Tyler and Catherine Anastasia
Kent Anderson
Stephen and Sylvie Blackburne
Robert and Christa Bolt
Bob Boylen
John Brennan
CAMPUS COOKS
Greg Carlson and Nancy Hirsch
Aaron Chmiel
Katja Coffey
George Constopoulos

Scott and Leslie Cordes
Country House Board
Karen Dekker
Steve and Linda Distler
Jerry and Caryl Doetsch
Brian Donnelly
Constantina Dornan
Caroline Duppler
Peter and Neva Egan
Christina and Tristan Farrell
FGK Services, Inc.
Rick and Nancy Firfer
Judi Fishman
Daniel Fraser
Patrick and Elizabeth Garvey
Glenview Community Church Women's
Association - Chapter 9
Glenview Professional Firefighters Assoc.
IAFF Local 4186
Marcel Graven and Jennifer Fitch
Harrison's Poultry Farm, Inc.
Max and Kristine Heitner
Chris and Eileen Henning
Jodi Hiller
Kelly Hoffman
Interwork Architects, Inc.
Marvin and Mary Ellen Johnson

Jim and Linda Johnston
Anne and Matt Junia
Karen M. Patterson, P.C.
Jeff Kellough
Patrick and Kathleen Kennedy
Paul Kiepura
James and Kimberly Kohl
Jeff and Michelle Langenbach
Andy and Liz Lapp
James Leone
Monique Lipman
John and Suzanne Lyhus
Bonnie Mamot
T.J. and Alicia Marriott
Paula Martin
Mary Ellen McGrath
Christine Myers
Ruth Newman
John and Merilee Novinson
Kristen Olson
Dean Parke
Ken Pearl
Edward A. Phillips and Nancy E. Spicer
James and Rita Planey
Caroline Riordan
Ernie and Dawn Rogers
Jennifer Roth

Larry and Nancy Roubitchek
Russe-Tojo Family
Allan and Jill Ruter
Cary and Michelle Saperstein
Mitchell Sawko
Bill Sei
Mark Shambo
Brad and Julie Shechtman
Miriam Sherin
Ankur Singal
Lisa Smith
Allan and Susan Swaringen
Erik and Lisa Synnestvedt
John and Susan Travis
Ronald and Sandy Van Epps
Julie and Bill Varga
Del Vasey
Steve and Julie Wenk
Tracy Whetstone
Blaine and Amy White
Anne Wieboldt
Wines for Humanity

\$100 to \$249
Heather Adams
Melissa Adland

Stuart Aizenberg
Thomas and Karen Aldrich
David and Janice Alexander
Allstate Insurance
Amy Altman
Amazon Web Services
John and Patricia Anderluh
Steven Anderson
Caren Appelton
Morgan and Wali Azim
Douglas and Marlene Baddeloo
Roy F. Baker
Gilbert and Janis Bathgate
Linda Baudhuin
Tom and Sharon Beck
Alison Beitzel
Margaret Berek
Chris Berg
Allan and Jan Bergman
Jason Berkowitz
Ira and Abbe Berry
Robert Bertog
Jack and Jennifer Bevington
Jeff and Laurie Binstein
Brian Black
Patrick and Rosemary Blandford
John Blix

Robert and Nancy Bloom
David E. Braden
Victoria Braund
Jill Brickman
Ellen Brotzman
Lynn Bruno
Bill and Liz Brush
Brad and Lisa Buchanan
Dale And Margie Buchholz
William Butler
Alan and Sharon Butman
Nicole Cain
Peggy Callas
Pete and Kristen Canalia
Patricia Carlson
Christine M. Cavallaro
Heidi Chalem
Chloe Chen
Betsy Chisholm
Marc Christman
Richard M. Clark and Mary J. Munday
Cynthia Clohesey
Jane B. Colman
Robert Compher
Richard and Nan Conser
Chris Conway
Marcia Craig

Mary Beth Deneffe
Mike Dolan
William and Susan Doyle
Tom and Theresa Drouillard
Thomas Durment
Mariellen Dwyer and James McDonald
Mark and Catherine Elfstrand
Elyssa's Mission
Lori and Rob Eshoo
Eternal Youth Spa Inc.
Allison Ewing
Ellen Fagerburg
Michael Fitzsimons
Joyce Fridell
Greg and Jane Furch
John and Sue Ellen Galligan
Mike and Ellen Garrison
Jim and Monica Garvey
Claudine Gerbel
Melissa and Ari Glass
Glenview Community Church Evening
Fellowship - Chapter 20
Glenview Community Church Women's
Association - Chapter 7
Glenview Community Church Women's
Association - Chapter 19
Barrett & Gobeyn

Charles and Beth Goldberg
Ken and Amy Goldberg
Gorman Foundation
Brian and Gretchen Grad
Catherine Granham
Paula Turner Grasso
Bill Graves and Lori Logli
Greystar
Jerry and Julie Guenther
Cee Guerrero
Madhavi Gupta
Tina Hacker
Raymond and Arlene Handler
John Hansmann
Steve and Kristin Haramaras
Joyce Heneghan
Joyce Hennelly
Bob and Nancy Hinchsliff
Daniel & Karen Hirsch
Kendal Horowitz
Mary Horwitz
Craig Hudson
Hunter Events
Steve and Kristine lida
Cathy Irwin
Randolph and Kimberly Isham
Robert P. & Marla Israel

James E. Jenz
Howard and Susanne Jessen
Andrea Joselit
Denise Juliano Damore
Julie Just
Bruce and Lauren Kaden
Jeanine Kane
Frank Karkazis
Jim and Joanna Kendall
Beth Kirk Malecki
Knebelkamp
Antonia Koulis-Antonakos and Anargyro Antonakos
KPMG LLP
David and Mij Kritzman
Denise Krug
Roopal Kundu
Amy and Bill Kwit
Audrey Larson
Richard and Joan Leopold
James and Barbara Levie
Joy Lewis
Vicky Limperis
Robert Livingston
Ralph and Holly Love
Joy MacLeod
Megan Mann

Kevin Martin
Veronica Mathein
Jim McAweeney
Kevin and Angela McCune
Ellen McDonald
Robert McGee
Claire S. McGuire
Melody Mcleod
Jennifer McNamara
Tim and Maria McNary
Maria G. Medina
Frank Mette
Shannon Middleton
Miner, Barnhill & Galland, P.C.
Ed Moder
Dave and Suzanne Moore
Zain Mohey-Deen and Renee Morosky
Motorola Solutions Foundation
Kathleen E. Murphy
Lee and Elise Nadler
P.V. Narayan
Nationwide Credit Clearing
Michele Nelson
Troy and Kerri Noard
David and Edith Nordby
North Branch Pizza & Burger
Northwestern Memorial

Andrew and Chris Northwick
Robert and Carolyn Orsi
Ray and Lucy Pagels
Kim and Jeffrey Paley
Jeffrey Parry
Shirley Paulson
Mike and Eve Perri
Mark and Gail Pierce
Lora Placik
Kathryn Pocklington
Karen Posey
Nina Pouloupoulos
Jeremy Puent
James Reynolds
Brian and Sharon Rieger
Jerry and Carole Ringer
Margaret Rodgers
Cory Ronek
William Rudolphsen and Mary Bendokas
Jeff and Sue Ryan
Ar Sakaeda
Susan B. Salerno
Jamie Samsel
Mary Samson
Alene and Alene Schaffner
Rudolph and Stephanie Schlosser
W. Scott & Janet L. Schwanke

Seth August
ServiceNow
Doug and Beth Shabelman
Harold and Mona Shabelman
Christy Shellenberger
Robin Sheperd
Catherine Shipp
Rick and Suzanne Shore
Susan Shute
Elyssa Siegal
David and Lisa Siegel
Johanna Silver
Nancy Simpson
Martha R. Smith
David H. Smith
St. Norbert's Church Women's Club Guild 11
Stacy Stillman
Kathy Stutz
Jim Svab
Sara Szumski
Temple Beth-El
The North Suburban YMCA
The Pinta Pride Project Inc.
Alta Thiel and Deborah L. Larson
Tim and Madonna Thoelecke
Susan Treehuboff
Andy and Kate Tulley

United Way of Greater Atlanta
Price Vetter and Amy Bandman
James and Susan Vlazny
Harvey and Gayle Wagley
Christian Wagner
William Weidman
John and Sarah Weir
Janet White
Michelle Wick
Tom and Jeanne Wilkinson
Keri Williams
Willow Lake Orthodontics
John and Carol Winzeler
Diane Wolf
Jill Yurk
John Zavitz
Christine Zerka Yoo

\$1 to \$100

Scott and Athena Abbott
Jerome and Estelle Agrest
Chris Albrecht
Mohammad and Gloria Amin
Teri Archam
Melva Arealo
Eric and Karen Arneson

Barbara Ballard-Feig
Charles and Marlene Balling
Yoselin Barrios
Tony Bedell
Sharon Benjamin
Deborah Berg
Neville Bilimoria
Kelly Blair
Mary Bleeker
Roberta Block
Patty Blockovich
Steven and Barbara Blonz
Blue Chip Marketing
Neal and Carol Blustein
Jason Bowman
Fred Boylen
Erika Brachowski
Matthew and Cathy Brackett
Sandy Bradbury
Julie Brame
Rebecca Brennan
Kelly Brown
Geraldine Brown and Charles D. Brown
Brian and Laura Bulger
Michael Burens
Nancy Bush

Crystal Bustamante
Jim Campbell
Paula Cantwell
Romano W. Castelli
Joan Caton
Center for Discovery
Manuel A Cervantes
Theodore & Linda Chabraja
Charles and Jeannie Chiang
EJ Choi
John A. Chuppe
Jon Cole
Cari Coleman
Helen Contos
Kenneth Cooke
Corner Bakery
Craig & Associates Ltd.
John D. Crawford
Sue Curtis
Virginia De Paul
Ann Deakyne
Susie Delis
Raymond and Marilyn Denten
Eduardo Diaz
Eileen Dillon
Jenny Dolins

Sara B. Doyle
Donald and Margaret Drag
Gregory D. and Ann S. Duchane
Bryan Duncan
Bill Durbin
Lisa Durchin
Denise B. Dwyer
Brenda Dwyer
Annette Egel
Jen Egen
Roger and Margaret Eisen
Bill and Renee Elworthy
Anne Engro
Greg and Shawn Eshoo
Nancy Faunce
Allan S. Feingold
Jerry and Susan Feldman
Richard Felt
Virginia Fender
Cindy Ficho
Sally, Arnie & Jacob Fishman
Megan Floyd
Bob Foley
Jessica Forrest
Kent and Jeryl Fuller
Dominika Gajewska

Julie Galiotto
Jennifer A. Geldermann
Britt Gerber
Nancy Gilbert
Dina Golden
Daniel Halperin and Carol Goodman
Walter E. Gray
Michael T. Grendon
Lauren Grossman
Ronald Guinsburg
Andrew and Tricia Hall
Susan S. Hall
Kevin and Kim Hand
Jeannette Hanley
Vivian Haralampopoulos
Sharon Harris
Irma Hart
Christine Hartigan
John and Joanne Hasmonek
Walter and Catherine Hazlitt
Mike and Elisa Helford
Elizabeth A. Herbert
Ellen Herbert
Richard and Gloria Herman
Stacy Hernandez
Ben and Mary Hershey

Sally Hicks
Ana Laura Hinojosa-león
Dori Hirsch
Cherie Hlavin
Richard Hochschild
Rosanne C. Hugunin
Patricia Humphrey
Jane Hutson
Holly Hyla
IBM Employee Services Center
Amy Itaya
ITW Foundation
Kris and Aaron Izenstark
Debbie Jacklow
Mark and Deanna Jacobson
Julie Jensen
Jewel-Osco - Plaza del Prado
Nick Lucariello and Lois Johnson
Bindu Joseph
Abbie Joseph
Debbie Jutzi
Funda Kahn
Jean Kaiser
Maritoni Kane
Barbara and Shelly Kantoff
Allan Siegal and Bonnie Katz

Abraham and Kate Katz
Joseph Kearney
Mary Kearney
Meghan Kearney
Jane Kelly
Dennis J. Kinsella
Bonnie J. Kohl
David and Marzena Kohn
Todd Kosel
Jay and Pat Kramer
Joe and Carla Krolopp
Jeannie Kurtzhals
Lisa Landsman
Larry Lau
Jeff Laubach
Dana Leonard
Cherie L. Lindskog
Missy Linn
Eric and Irene Lo
William and Karen Long
Kathleen Lowell
Ross MacIver
Christen Mahlmeister
Barbara Malkin
Jennifer Marsh
Grace Martinsen

Robert and Joyce Maslanka
 Peter and Marcia Masloski
 Lauren Matles
 Mary Maxey
 William and Kathleen McCarthy
 John C. McLeod, Jr.
 McMaster-Carr Supply Company
 Laura McNeela
 James and Frances Meadows
 Francesca Meder
 Barbara Meyer
 Kathy Meyers
 Michi
 Erin Miller
 Linda Miller
 Ira Mirochnick
 Christine Mitchell Roman
 Nelida Morales
 Denise Morgan
 Evangelina Murillo
 Maryrose Murphy
 Lon W. Myers
 Andrew Nilsen
 Kathleen Nowlin
 Amelia Olandese
 Nicole Olds

Steven Oliver
 Roy and Beth Olson
 Thomas and Sandra O'Rourke
 Vincent Pacis
 Victoria Pagnucci
 Maria Palillero
 Susan Palkovic
 Veronica Perez
 Bernard Petchenik
 Donna Peterson
 PFlag
 Susan Pinelli
 Vic and Maral Poladian
 Michael Pollak
 Mary K. Poppe
 Dan Powell
 PPM America, Inc.
 Rhonda Pruitt
 Richard Pullano
 Olga Ramirez
 Rosa Ramirez
 Jerry Remien
 Katie Roberts
 Laura Rodriguez
 Ed Russell
 John and Colleen Sanguinetti

Teresa S. Sapienza
 Marilyn Sawicki
 Donald W. Schwanke
 Ronald K. Schwanke
 Sandra Schwarz
 Mike and Shawn Sefchick
 Kim Shampine
 Jim Sherman
 Erin Siemens
 George and Diane Silca
 Debra Sinclair
 Edward and Frances Slisz
 Ellen Sotoloff
 Jenny Spiggos
 Natalie Stanzi
 Paula Stoddard
 Kiv Talty
 David Tapia
 Nancy Taylor
 Richard and Marcia Templer
 John Thissen
 Bill and Patricia Thompson
 Tom and Sally Thuresson
 Juan Toledo
 Karen Toomey
 Mim Tournell

Adam Troutman
 Catherine Tshilds
 Robert Uhland
 Terry Usher
 Alba Vasques
 Village of Northbrook Fire
 Department
 Charlene Washburn
 Rosie Weaver
 John and Mary Weber
 Beverly Wehrenberg
 Arthur Weiner
 Owen West
 Steph Whisler
 Glenn and Julie Wiemer
 Scott Williams
 Joyce Wippman
 Hideki Yoshino
 Your Pie
 Margie Zimmer
 Bruce and Jullie Zinneman

*This list reflects donations received
 between July 1, 2018 and June 30, 2019.
 Please excuse any errors.*

TOP YS CORPORATE *partners*



DONATIONS IN *Kind*

\$1,000 to \$2,499

Diane Barr
Jim and Pam Buchholz
William DeWoskin
Flight Restaurant & Wine Bar
Glenview Sunrise Rotary
Halo Medicine
Maple & Ash
Northbrook Woman's Club Foundation, Inc.
Owen O'Donnell
Patron of the Arts in the Vatican Museums
David Prospero
Wines for Humanity

\$500 to \$999

Lynn Barnett
Burn Boot Camp Glenview
Daniel's Jewelry
Ebert Studio
Holy Trinity Lutheran Church Youth Group
John Howard
Katz and Stefani, LLC
PJ and Susan Loughran
Premier Fitness
Saints Peter & Paul Greek Orthodox Church

Nancy Schwarz
William Sullivan
Sweet Ali's Gluten Free Bakery
The Glenview Park District
Weber-Stephen Products
Mary Zouras

\$1 to \$499

Accuity
Allstate
Andreas Hogue Salon
Apricot Lane - The Glen
Arami - Fujimara Hospitality
Avec
Barnaby's of Northbrook
Ben Silver - Charleston
Bentley's Pet Stuff
Big Blue Swim School
Blue Chip Marketing
Michael and Sandy Brennan
Michelle and Bill Brody
Bill Brush
Buffalo Wild Wings
Michael and Barb Cabay
Caralyn Kempner, Organizing Interiors

Chateau Chantal
Cheesecake Factory Incorporated
Chicago Bears Football Club
Chicago Bulls
Chicago Shakespeare Theater
Chicago Zoological Society
Chicago/Northbrook Hilton
Regina Choe
City Kid Theatre Company
Club Lucky
Brooke Collins
Core Power Yoga
Corner Bakery
Cornerstone Evangelical Free Church
Court Theatre
Jason Crane
Dairy Queen Northbrook
DancEd Dance Centre
Dedicated 2 Fitness
Deloitte LLP
Depot Nuevo & The Noodle Cafe
Destination Fitness In-Home Training
Jorie Dicocco
Stephen and Nancy Dowdle
Dream Plan Disney
Elements Massage

Elly's Pancake House
Estetica Professional Hair Design
Eye Level
F5 Networks
Families Helping Families Chicagoland
Family Video
Fireside Restaurant
Fleming's Steakhouse
Fonseca Martial arts
Forza Meats
Naomi S. Frankel
Daniel Fraser
Game On! Sports 4 Girls
Ari and Melissa Glass
Glenview United Methodist Church
Beth Goldberg
Gretchen Grad
Marcel Graven and Jennifer Fitch
Graziano's
Gusto Italiano
Matt and Lisa Hanneman
Irma Hart
Il Forno Pizza
Illinois Railway Museum
Stephanie Izard
Jewel-Osco - Heatherfield

Jewel-Osco - The Glen
John G. Shedd Aquarium
John W. Weiss Ace Hardware
Johnny's Kitchen & Tap
Arlette Karnouzian Metti
Katy Boldt Jewelry Design
Kay Jay Photo
Kingston Mines
Blair Klein
Kohl Children's Museum
Laugh Factory Chicago
Lauren Laughlin
Lettuce Entertain You Enterprises, Inc.
Steve Lombardo
Lou Malnati's Pizzeria
Lynfred Winery
Amy McClory
Meatheads Northbrook
Metropolis Performing Arts Centre
Margaret Middleton
Erin and Chuck Miller
Mingle Juice Bar
National Charity League
Edith Nordby
North Suburban YMCA
Northbrook Park District

Northlight Theatre
Northwest Passage
Northwestern Athletics
Oceanique
Tammy O'Donnell
Oil Lamp Theater
Steven Oliver
Orangetheory Fitness
Dana Palmer
Pearl's Southern Comfort
Brian Pettersen
Pump It Up
Pure Barre Glenview
Samandhi Yoga
Glenn and Janet Schneider
Andrew and Jen Shabaz
Shakou Restaurants
SHE Software Limited
Anne Shea
Skydeck Chicago
Shakou Restaurants
SHE Software Limited
Anne Shea
Skydeck Chicago

Sol Pol Painting & Remodeling
Soul Cycle
St. Norbert's Church Women's Club Guild 5
St. Philip Lutheran Church
Stella315
Target Greatland
Teddie Kossof Salon & Spa
Ten Ninety Brewing Company
The Bar Method - Highland Park
The Claim Company
The Happ Inn
The Second City
Trattoria D.O.C
Village of Glenview
Walter E Smithe Furniture
Waterway Car Wash - Glenview
Jennie Weinstock
Tonya Wheeler
Woman's Philanthropic Exchange Group
Your Pie at The Glen
Youth Services of Glenview/Northbrook
Zanies Comedy Night Club

THANK
you





Youth Services
3080 West Lake Ave.
Glenview, IL 60026

ysgn.org